

## Concrete Ring Beam Notes and Guidelines

1. This document contains the minimum required dimensions and guidelines and is not to be used for construction unless officially issued by an approved engineer or company representative
2. SBS is not responsible for any loss or damage caused by an incorrectly designed or built ring beam.
3. Ring beam sizes shown are suitable for geographic areas which do not experience wind speeds exceeding 40 m/s (144 km/h). Should wind speeds in excess of this be expected, then special designs must be prepared.
4. It is very important for the client to ensure that at foundation conditions comply to the following minimums.  
Minimum requirements:  
- Safe bearing capacity should equal or exceed 100 kPa  
- The founding material should be stable
5. Most sands and gravels that have been compacted to 100 kPa or more will be adequate, provided that there is stable soil underneath.
6. Should there be any doubt about the stability or strength of the foundation, site specific professional engineering advice must be sought.
7. In areas with corrosive soil conditions, special protective measures should be used.
8. Ring beam dimensions are typical and provided for costing purposes only. Final ring beam dimensions may vary depending on soil conditions, climatic conditions, etc.
9. Ring beam width and depth are tank model dependant and allow for specialised jacking when required. Ring beam dimensions must not be altered for any unapproved reason and without any consultation from the supplier.
10. Not to scale

## Construction Tolerances

Outside Diameter Ø	+ 20 mm - 0 mm
Inside Diameter Ø	+ 0 mm - 20 mm
Level of top surface	+/- 2 mm over any 2 m sector of circumference measured/surveyed at tank wall final position. +/- 4 mm over entire ring beam

Rev.	By	Date	Revisions	Approved
5				
4				
3				
2				
1				

## Concrete Ring Beam Material Quantities

1	Stirrup R-10 (SANS 282: 2011, Shape Code 72)	pieces
2	Reinforcing Bar Y-12 (6.5 m lengths)	lengths
3	Concrete Volume	cubic metres
4	Internal Sand Bed Volume	cubic metres
5	Aggregate Volume	cubic metres


## Concrete Ring Beam & Stirrup Dimensions

Ring Beam Outer Diameter Ø	
Ring Beam Inner Diameter Ø	
Ring Beam Width	500 mm
Ring Beam Depth	300 mm
Stirrup Width	400 mm
Stirrup Depth	200 mm



Approved for Construction

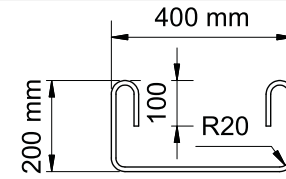
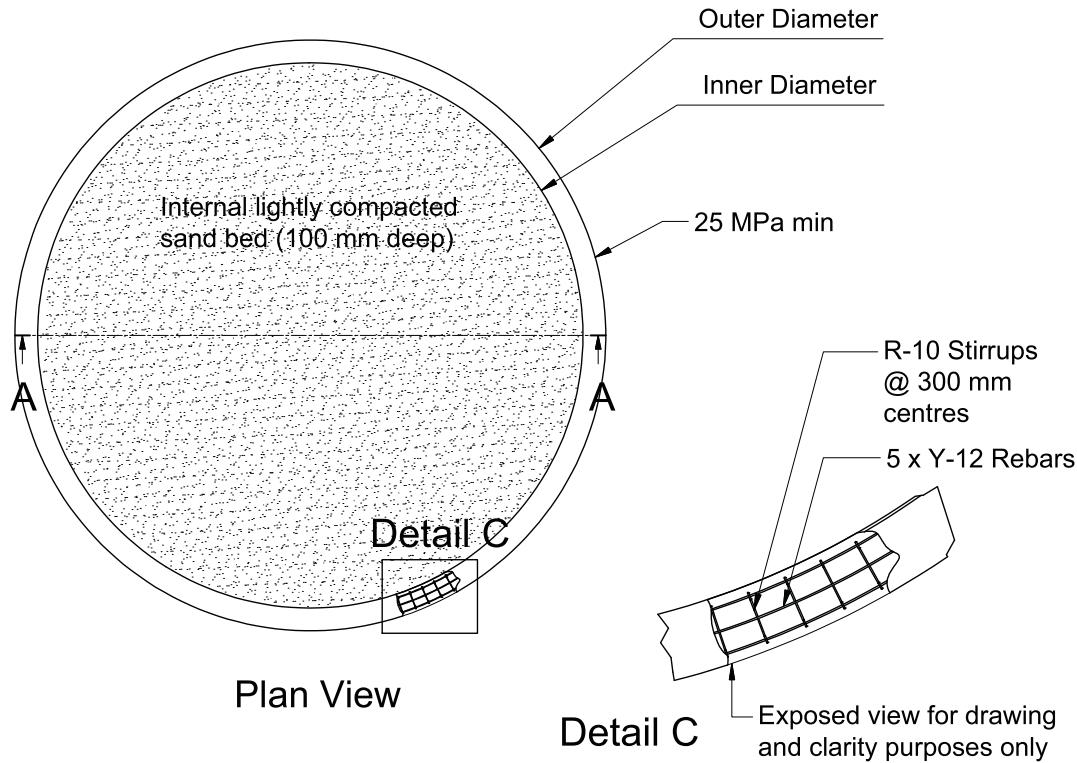
Name	Sign	Date	Designation

Drawn: BEW	 <p>Unit 6 Surprise Park, 11 Surprise Rd, Maxmead, 3610 Kwa-Zulu Natal, South Africa Tel: +27 (0)31 716 1820 Fax: +27 (0)31 716 1821 e-mail: info@sbs-tanks.co.za www.sbs-tanks.co.za</p> <p><small>The information contained herein is property of SBS Water Systems (Pty) Ltd and is covered by patent and copyright. This drawing is confidential and its contents may not be copied, reproduced or used for any purpose other than that originally intended without prior written permission of SBS Water Systems (Pty) Ltd.</small></p>	Title: Concrete Ring Beam, Reinforced - General	
Date: 2014/04/22		Dwg No: Concrete Ring Beam, Reinforced - General	Rev: 00
Approved: BMcP		Description: Standard	Sheet: 1 / 2
Date: 2014/04/24			

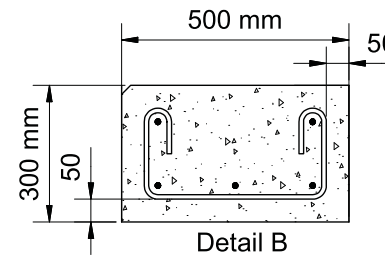
# Concrete Ring Beam - Not to Scale



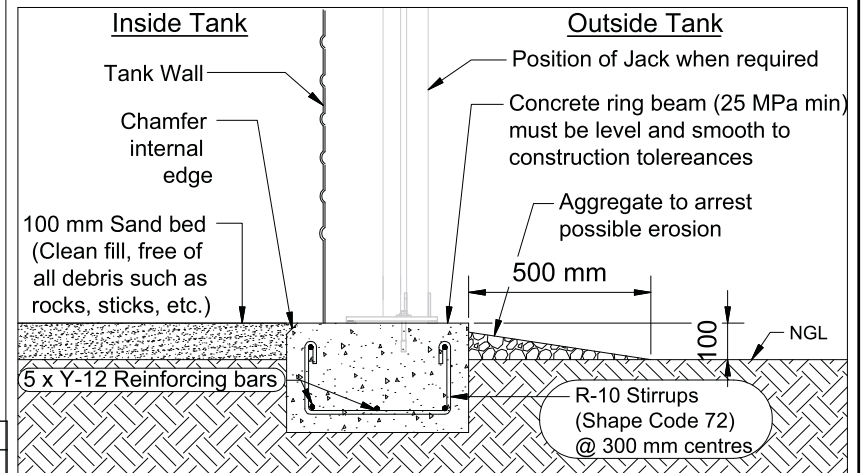
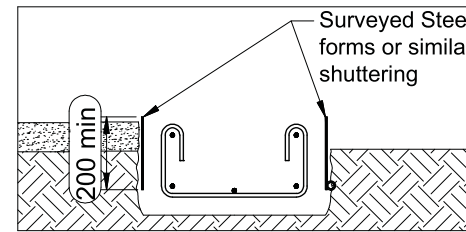
Sectional Front View on A-A



R-10 Stirrup Dimensions  
(SANS 282: 2011, Shape code 72)



Concrete Ring Beam Width & Depth



Finished Ring Beam Detail

Approved for Construction

Name	Sign	Date	Designation

Rev.	By	Date	Revisions	Approved
5				
4				
3				
2				
1				

Drawn:	BEW
Date:	2014/04/22
Approved:	BMcP
Date:	2014/04/24

**IBS Tanks**

A premium product made by IBS Water Systems (Pty) Ltd

Unit 6 Surprise Park, 11 Surprise Rd., Maxmead, 3610 Kwa-Zulu Natal, South Africa  
Tel: +27 (0)31 716 1820 Fax: +27 (0)31 716 1821  
e-mail: info@ibstanks.co.za www.ibstanks.co.za

The information contained herein is property of IBS Water Systems (Pty) Ltd and is covered by patent and copyrights. This drawing is confidential and its contents may not be copied, reproduced or used for any purpose other than that originally intended without prior written permission of IBS Water Systems (Pty) Ltd

Title: Concrete Ring Beam, Reinforced - General	
Dwg No: Concrete Ring Beam, Reinforced - General	Rev: 00
Description: Standard	Sheet: 2 / 2